



Viadux, 42 Great Bridgewater Street, Manchester, M1 5LJ

£507 Per Week

MANCHESTER'S NEWEST AND MOST LUXURIOUS DEVELOPMENT
THE VIADUX ON GREAT BRIDGEWATER STREET M1

11TH FLOOR
BRAND NEW TWO BEDROOM TWO BATHROOM APARTMENT

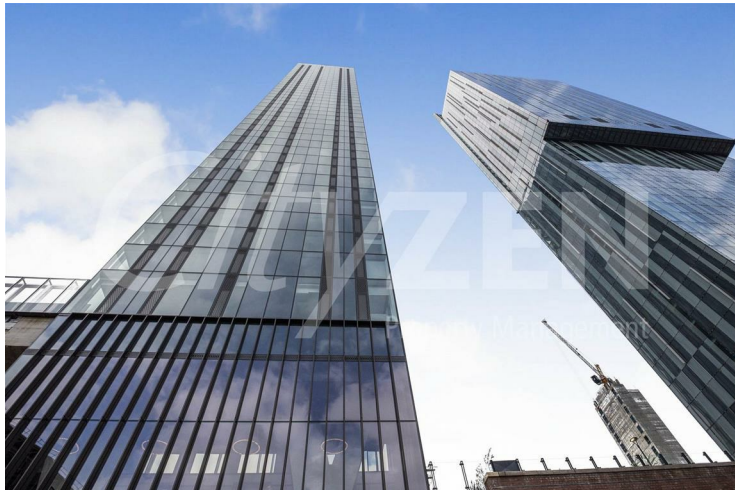
HOTEL STYLE AMENITIES INC: RESIDENTS POOL, GYM, SPA, LOUNGE, BAR, WORKSPACES, CINEMA & EVEN A KARAOKE ROOM!

FURNISHED

AVAILABLE 20th JULY 2026

- THE VIADUX
- HOTEL STYLE FACILITIES INC POOL, GYM, CINEMA, CONCIERGE
- 11TH FLOOR
- ONE OF THE MOST LUXURIOUS BUILDINGS IN MANCHESTER
- BRAND NEW 2 BED 2 BATH APARTMENT
- DIRECT ACCESS TO METROLINK
- FURNISHED
- "SALBOY" LUXURY DEVELOPMENT
- AVAILABLE 20TH JULY 2026
- STUDENTS OR PROFESSIONALS WELCOME

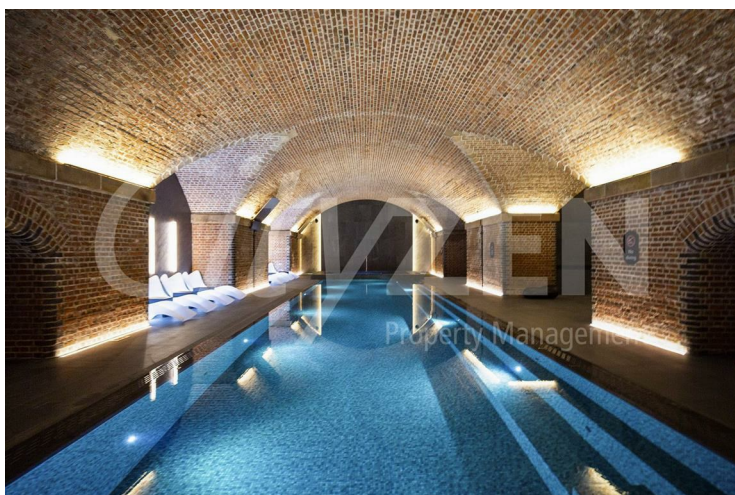
Viadux, 42 Great Bridgewater Street, Manchester, M1 5LJ



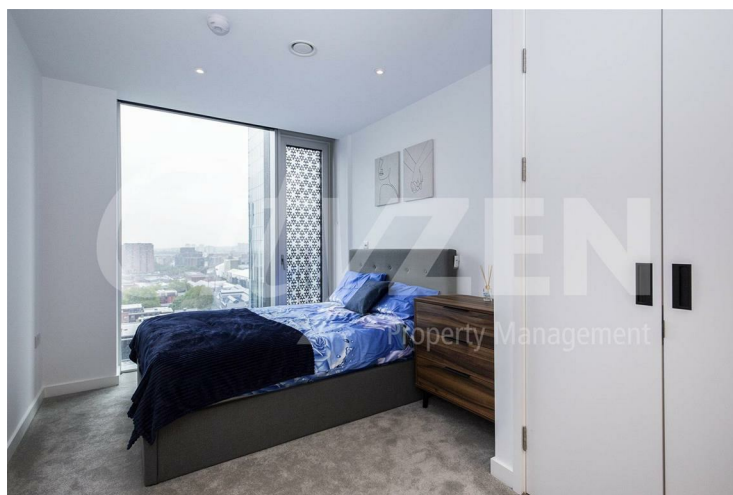
VIADUX



CINEMA



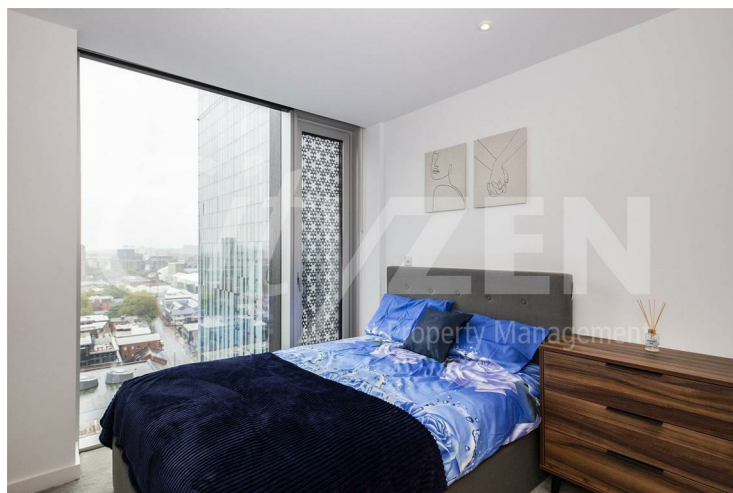
POOL



BEDROOM



POOL



BEDROOM

Viadux, 42 Great Bridgewater Street, Manchester, M1 5LJ



BEDROOM



BEDROOM



HALLWAY



RECEPTION ROOM



BEDROOM



RECEPTION ROOM

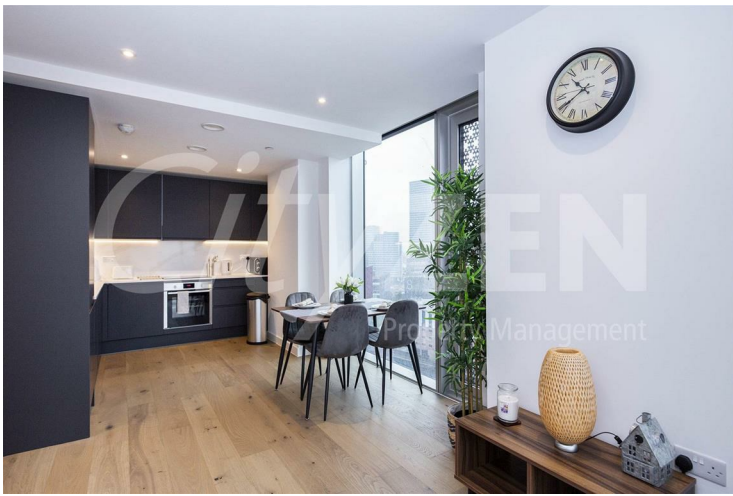
Viadux, 42 Great Bridgewater Street, Manchester, M1 5LJ



RECEPTION ROOM



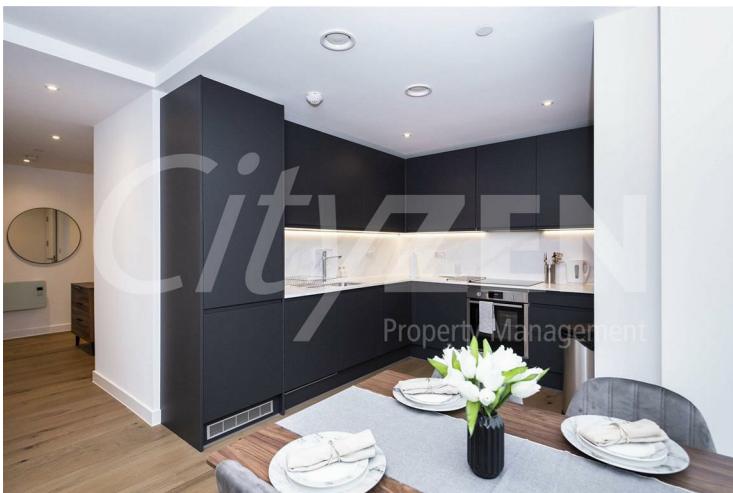
KITCHEN



KITCHEN



BATHROOM



KITCHEN

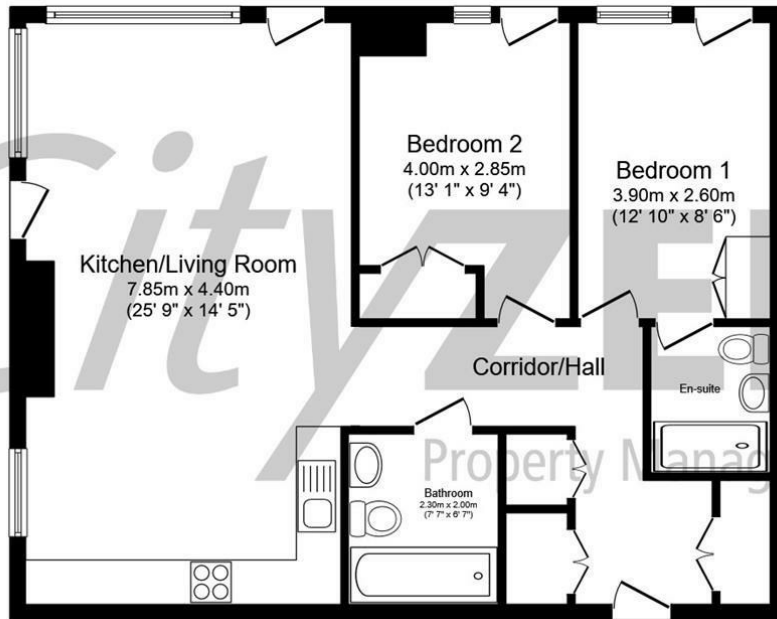


EN SUITE SHOWER ROOM

Viadux, 42 Great Bridgewater Street, Manchester, M1 5LJ

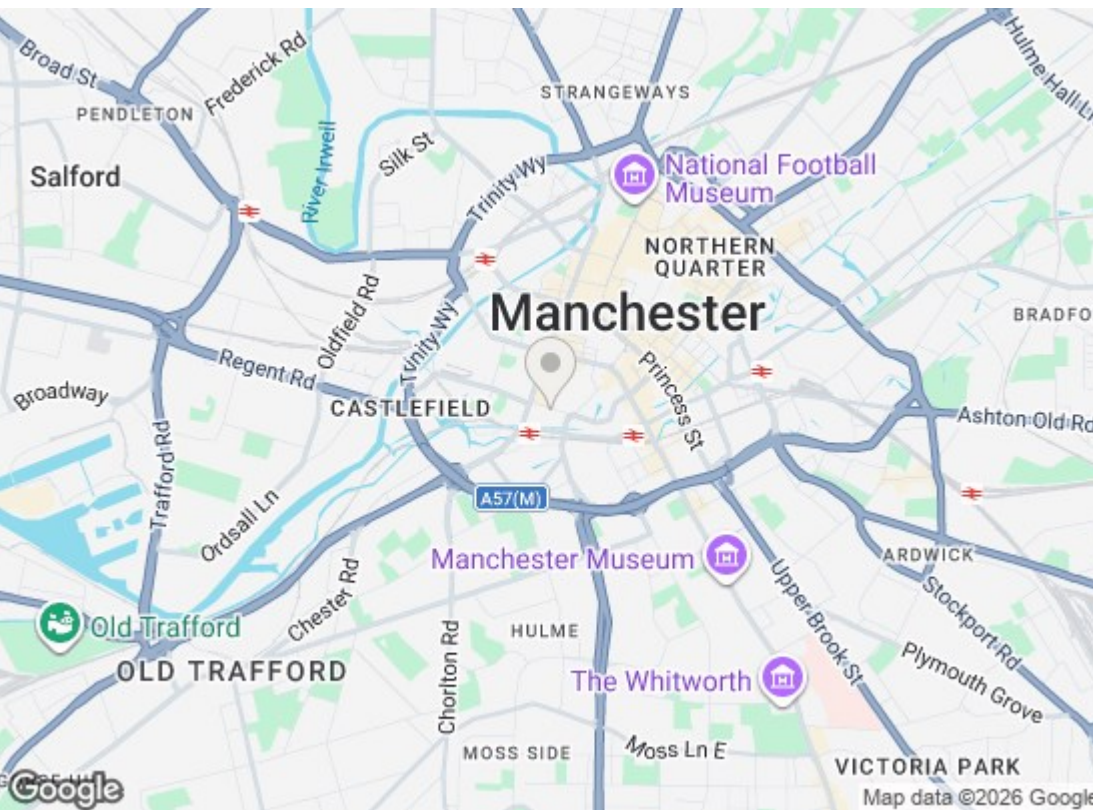


RECEPTION ROOM



Total floor area 78.9 m² (849 sq.ft.) approx

This floor plan is for illustrative purposes only. It is not drawn to scale. Any measurements, floor areas (including any total floor area), openings and orientation are approximate. No details are guaranteed, they cannot be relied upon for any purpose and they do not form part of any agreement. No liability is taken for any error, omission or misstatement. A party must rely upon its own inspection(s). Powered by www.focalagent.com



| Energy Efficiency Rating | | |
|---|-----------|-----------|
| | Current | Potential |
| Very energy efficient - lower running costs | | |
| (92 plus) A | | |
| (81-91) B | | |
| (69-80) C | 80 | 80 |
| (55-68) D | | |
| (39-54) E | | |
| (21-38) F | | |
| (1-20) G | | |
| Not energy efficient - higher running costs | | |
| EU Directive 2002/91/EC | | |
| England & Wales | | |
| Environmental Impact (CO ₂) Rating | | |
| | Current | Potential |
| Very environmentally friendly - lower CO ₂ emissions | | |
| (92 plus) A | | |
| (81-91) B | | |
| (69-80) C | | |
| (55-68) D | | |
| (39-54) E | | |
| (21-38) F | | |
| (1-20) G | | |
| Not environmentally friendly - higher CO ₂ emissions | | |
| EU Directive 2002/91/EC | | |
| England & Wales | | |

We have prepared these property particulars as a general guide to a broad description of the property. They are not intended to constitute part of an offer or contract. We have not carried out a structural survey and the services, appliances and specific fittings have not been tested. All photographs, measurements, floorplans and distances referred to are given as a guide only and should not be relied upon for the purchase of carpets or any other fixtures or fittings. Lease details, service charges and ground rent (where applicable) and council tax are given as a guide only and should be checked and confirmed by your Solicitor prior to exchange of contracts.